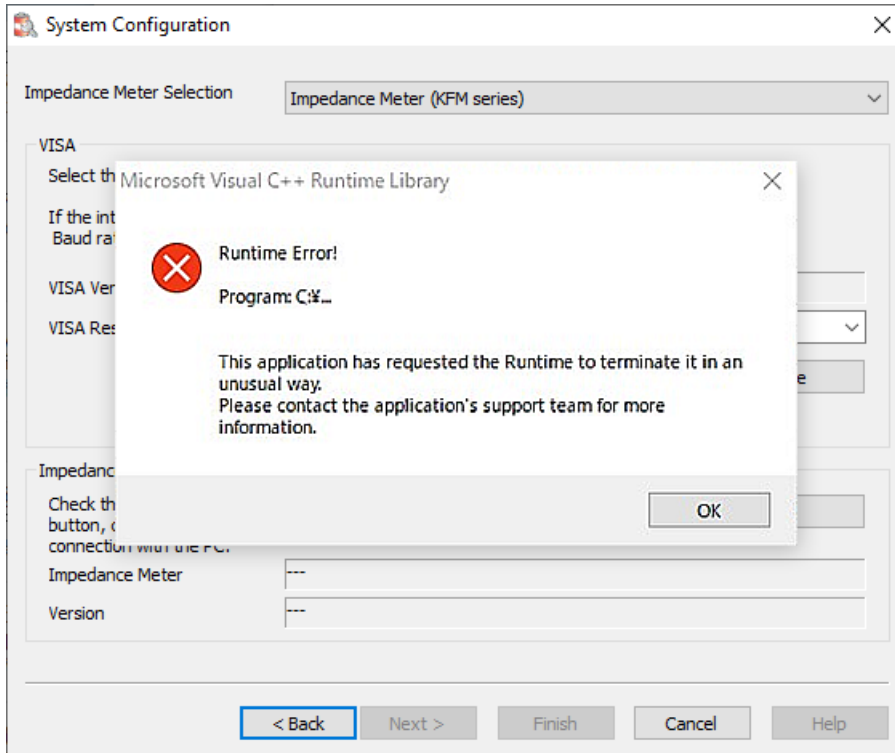


FCTester

If your PC does not have a RS232C port

To use FCTester, a RS232C port or virtual COM port is required on the PC (personal computer) on which FCTester is installed. This is because FCTester is also supposed to be used with the KFM2151 (scanner) connected to the PC.

If your PC does not have a RS232C port or virtual COM port, the following runtime error will occur when using the FCTester Configuration Tool, and the FCTester will not work.



Please check the countermeasures on the next page.

NI is a trademark of National Instruments Corporation in the United States.

KIKUSUI ELECTRONICS CORP.

1-1-3 Higashiyamata, Tsuzuki-ku, Yokohama,
224-0023, Japan

Phone: +81-45-482-6353

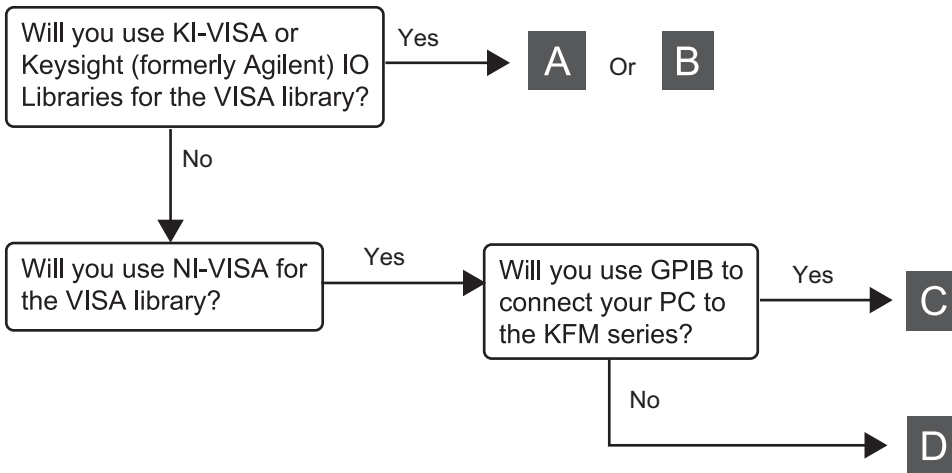
Facsimile: +81-45-482-6261

www.kikusui.co.jp/en/



Countermeasures

Please check the flow below and try the appropriate countermeasure.



Countermeasure options

A

Use a commercially available USB-RS232C converter to add a RS232C port to your PC.

B

Use a PC that has a RS232C port.

C

NI-VISA cannot be controlled by GPIB. Please try one of the following countermeasures.

- (1) Connect your PC to the KFM series via USB or RS232C and use NI-VISA for the VISA library. Add a virtual COM port in NI MAX [\(p. 3\)](#).
- (2) Connect your PC to the KFM series via GPIB and use KI-VISA or Keysight IO Libraries for the VISA library. Add a RS232C port to your PC with a commercially available USB-RS232C converter, or use a PC with a RS232C port.

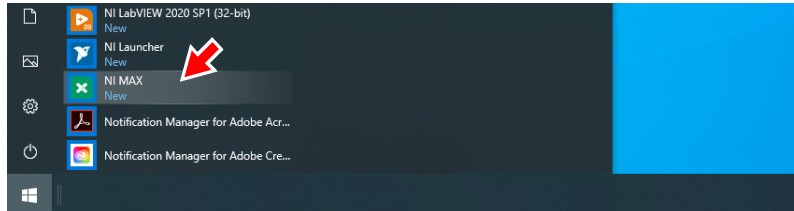
D

Add a virtual COM port in NI MAX [\(p. 3\)](#). No USB-RS232C converter is required.

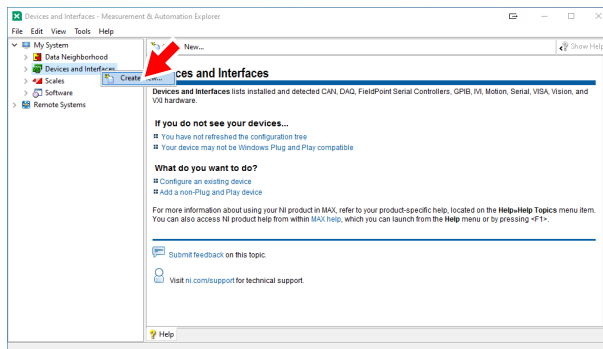
Add a virtual COM port in NI MAX

When implementing **C**-(1) or **D** in the Countermeasure options (p.2), add a virtual COM port in NI MAX. The procedure is explained using NI-VISA 20.0 as an example.

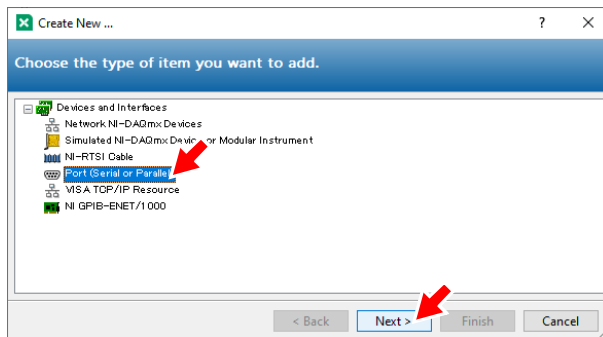
1 Start NI-MAX from the start menu.



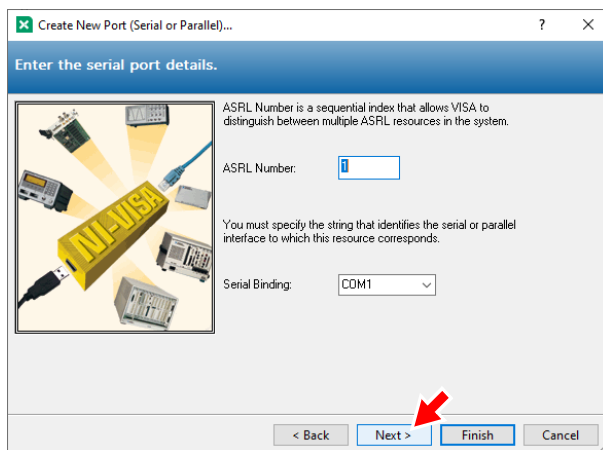
2 Right-click on Devices and Interfaces and click Create New.



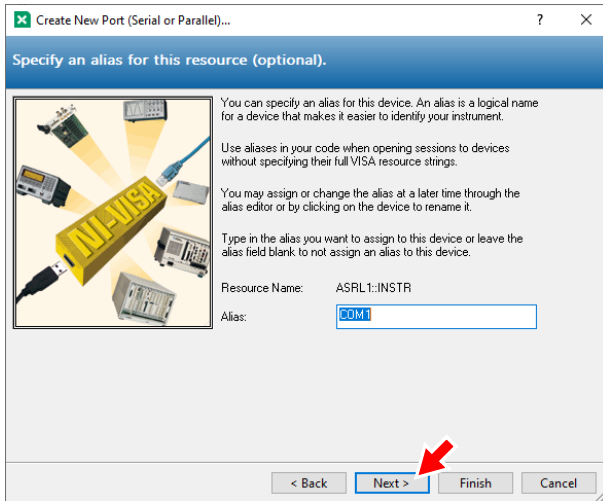
3 Select Port (Serial or Parallel) and click Next.



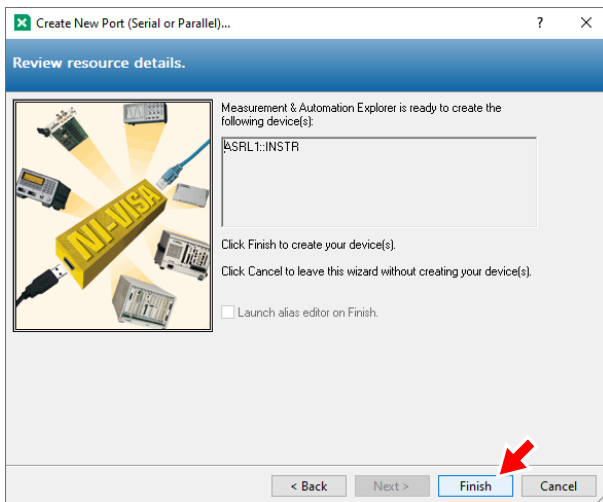
4 Click Next.



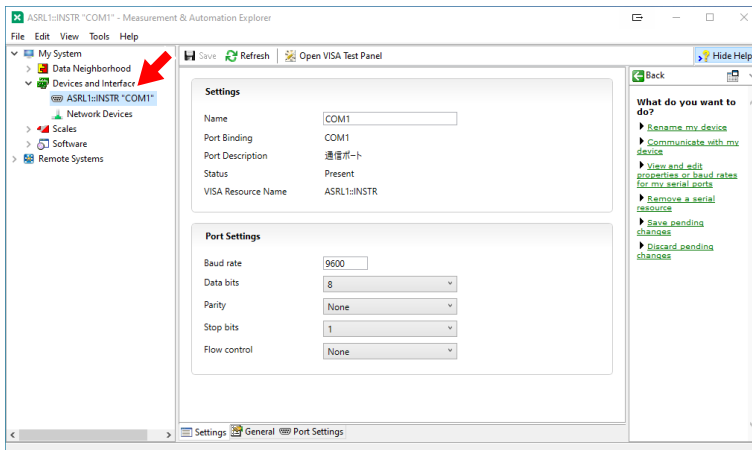
5 Click Next.



6 Click Finish.



7 Confirm that ASRL ... is displayed under Devices and Interfaces.



This completes the setting.